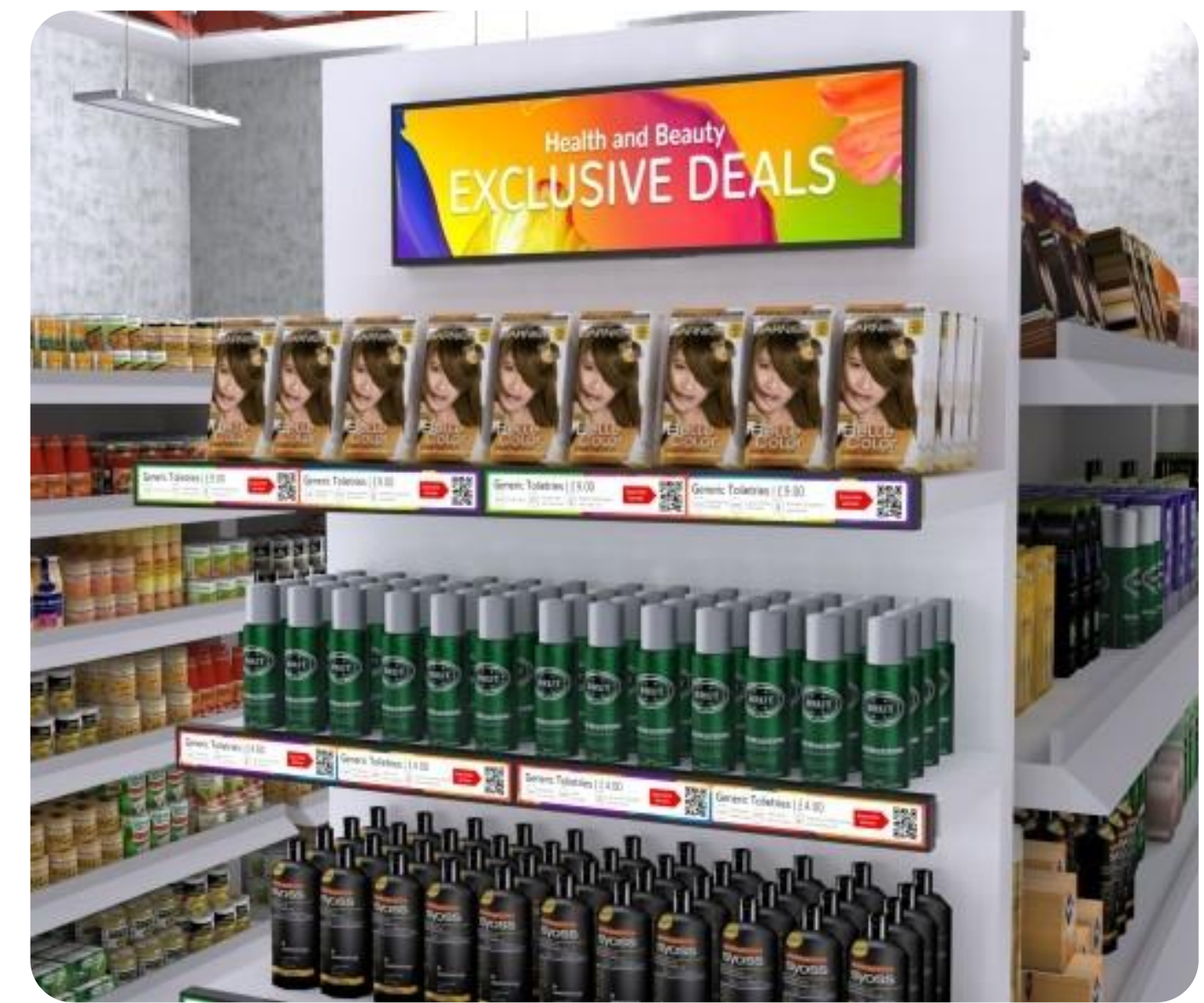


Retail Product Spotlight

Empowering the retail industry with inspiring digital solutions



1. Indoor Digital Advertising Displays

- ideal for instore promotions



2. Wide Format Displays

- ideal for aisle end & above fridge areas



3. POS & Self Order Kiosks



4. Ultra High Bright Window Displays



5. Outdoor Digital Solutions



Why Digital Signage for Retail Stores?

- Eye-catching content to attract customers
- Engaging with unique store experiences
- Fresh & Modern to fit new age of retail
- Boost Sales with seamless customer experience
- Easily scalable solutions

80%

of brands experienced a significant increase of up to 33% in additional sales after introducing Digital Signage Solutions to a store

Digital Android Screens

32" | 43" | 50" | 55" plus (65" -98" options)

Cost-effective package solution; 24/7 commercial grade displays with built-in network media player

Whether displaying adverts or menus, these multipurpose displays are an all-in-one network package digital signage solution **supplied with free 1 year CMS software subscription**



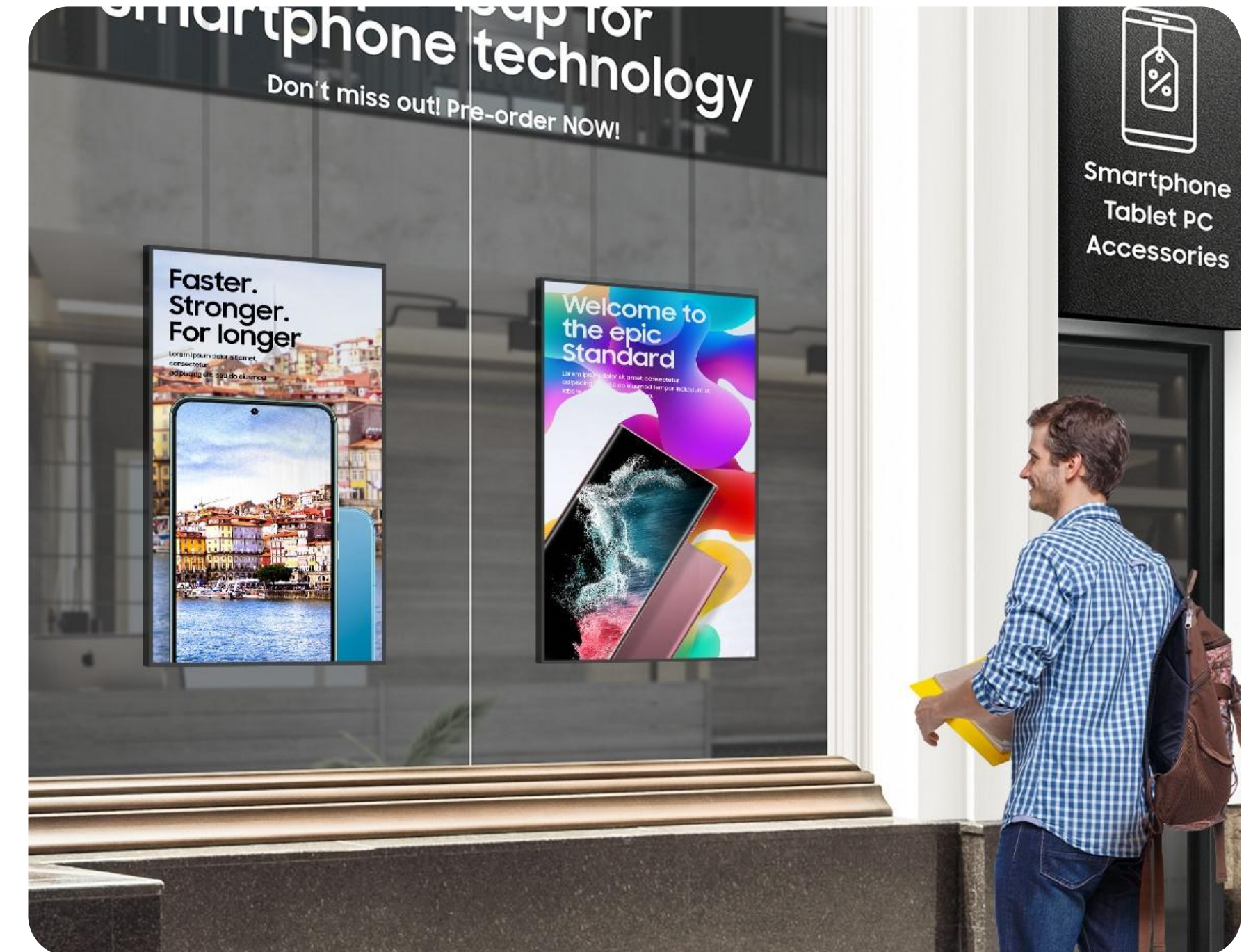
Ultra High Bright Window Displays

43" | 49" | 55" | 65" | 75"

Designed for outward-facing window displays in direct sunlight

Promote content in any storefront window engage audiences, **increasing the probability of an in-store visit** with displays featuring:

- manual brightness adjustment up to 3500 cd/m2
- ultra resistant blackening
- smart temperature control



Hanging Double Sided Window Displays

49" | 55"

Designed for outward-facing window displays
in direct sunlight,

Promote content in any storefront window engage audiences,
increasing the probability of an in-store visit with displays
featuring:

- manual brightness adjustment up to 3500 cd/m²
- ultra resistant blackening
- smart temperature control

Integrated:

- Double sided Android Screens
- Hanging kit
- Android Media players

Also available – Separate stand for Freestanding option.

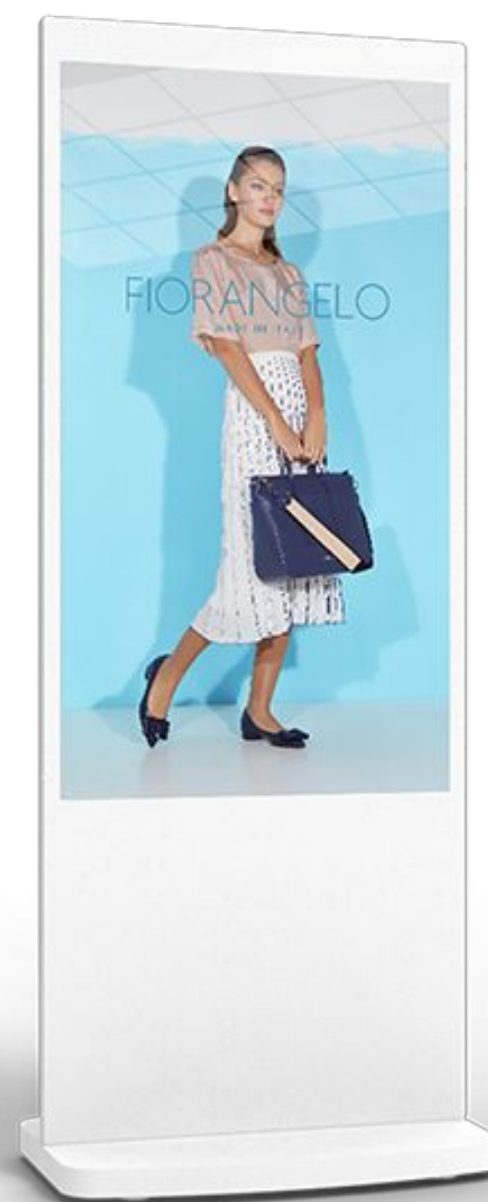
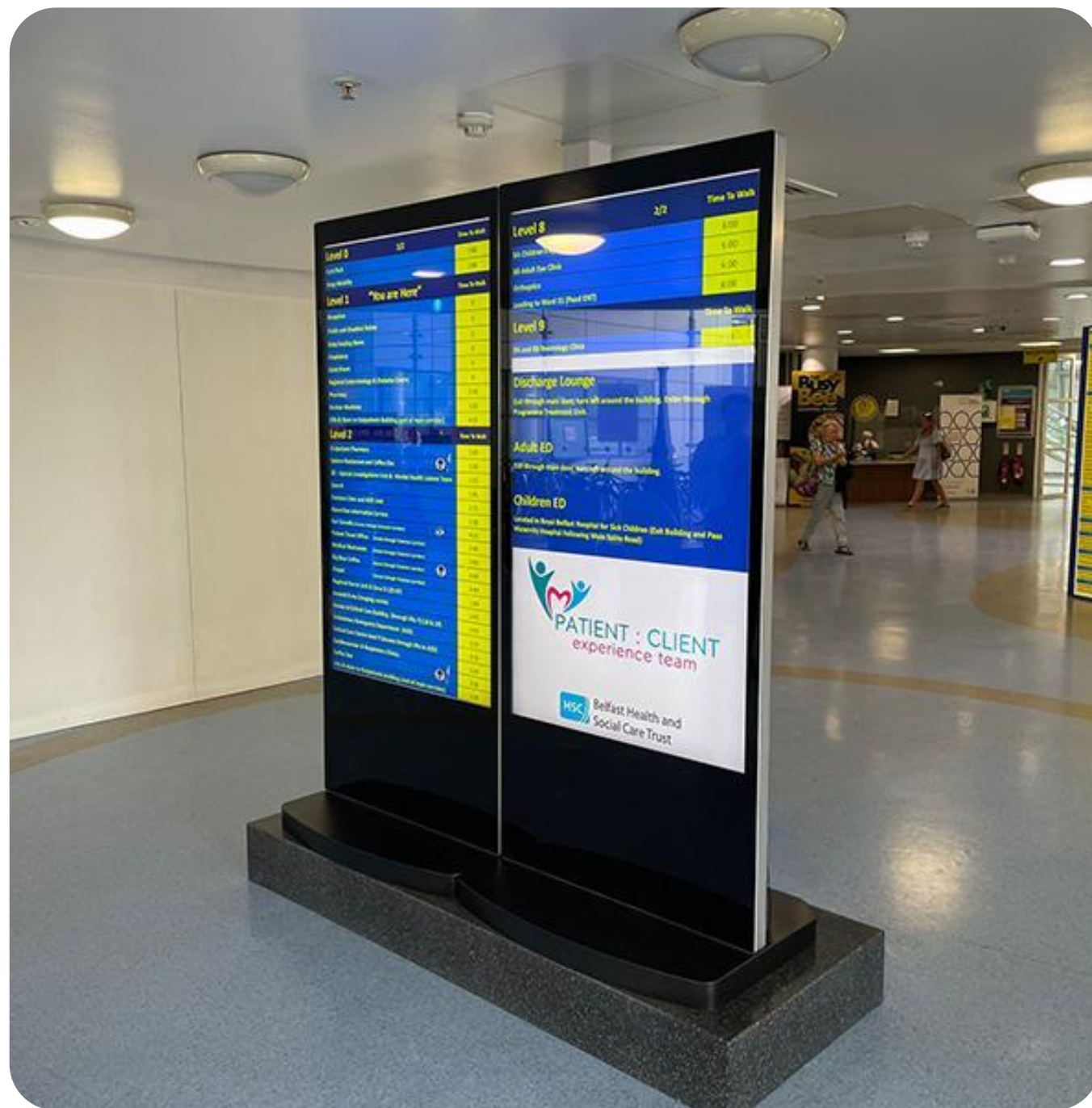


Freestanding Digital Screens

50" | 55" | 65"

Slim Modern Freestanding Digital Screen;
24/7 commercial grade displays with built-in network
media player.

These multipurpose displays are an all-in-one solution, no install
required, just plug in connect to LAN or Wifi and Play. **Available in
CMS or USB, Black or white.**



Battery Powered Digital A-Board

43"

A great versatile unit, Designed for outdoor and Indoor use, can be
moved from area to area without need for direct power source.

- Battery Powered
- 27 hours running time from single charge
- 1500cd Brightness
- Tempered Anti-Glare Glass
- Secure Locking Bar
- 24/7 usage, CMS or USB version



Ultra Wide Stretch Displays

28" | 37" | 76"

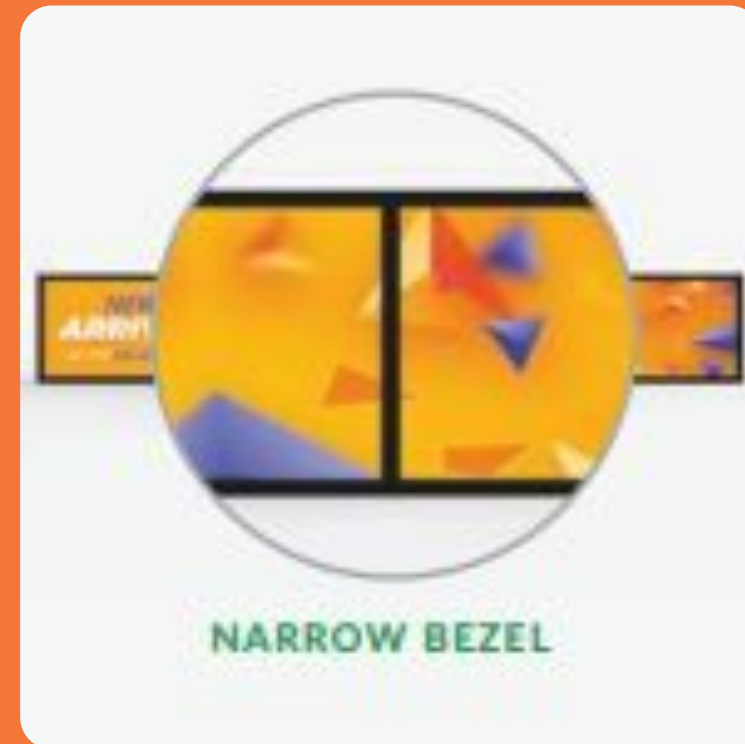
Perfect as a banner-style endcap display in retail stores and supermarkets

These display with unique aspect ratio that are guaranteed to grab attention and are ideal for unconventional spaces

Whether being used as part of an end-aisle display or as a unique individual screen, this solution offers a versatile range of possible applications.



Features



POS Android Displays

10" | 15"

Tablet-sized commercial displays for retail shelf edge and point of sale applications



PCAP Self Order Kiosks

22" | 27"

Self-ordering touch screen solution with integrated QR code scanner and receipt printer

The numerous benefits for self service systems are clear,

- allowing staff to focus more on customer service
- reducing queues and waiting times
- improving and optimising the overall customer experience.

This all-in-one solution is used in a range of retail spaces providing a PCAP touch screen, QR Code scanner, printer in one solution. There is also space to integrate a credit card payment reader.



Discover the latest trends in retail, and solve the following problems:

- Bring the benefits of online shopping into the store
- Bring a new experience to customers?
- Offer unlimited choice

A new hybrid shopping solution digitises your full product range with interactive touch-screens, and allows your customers to have their selected items in their hands within minutes

DV-LED All-in-One Window Display

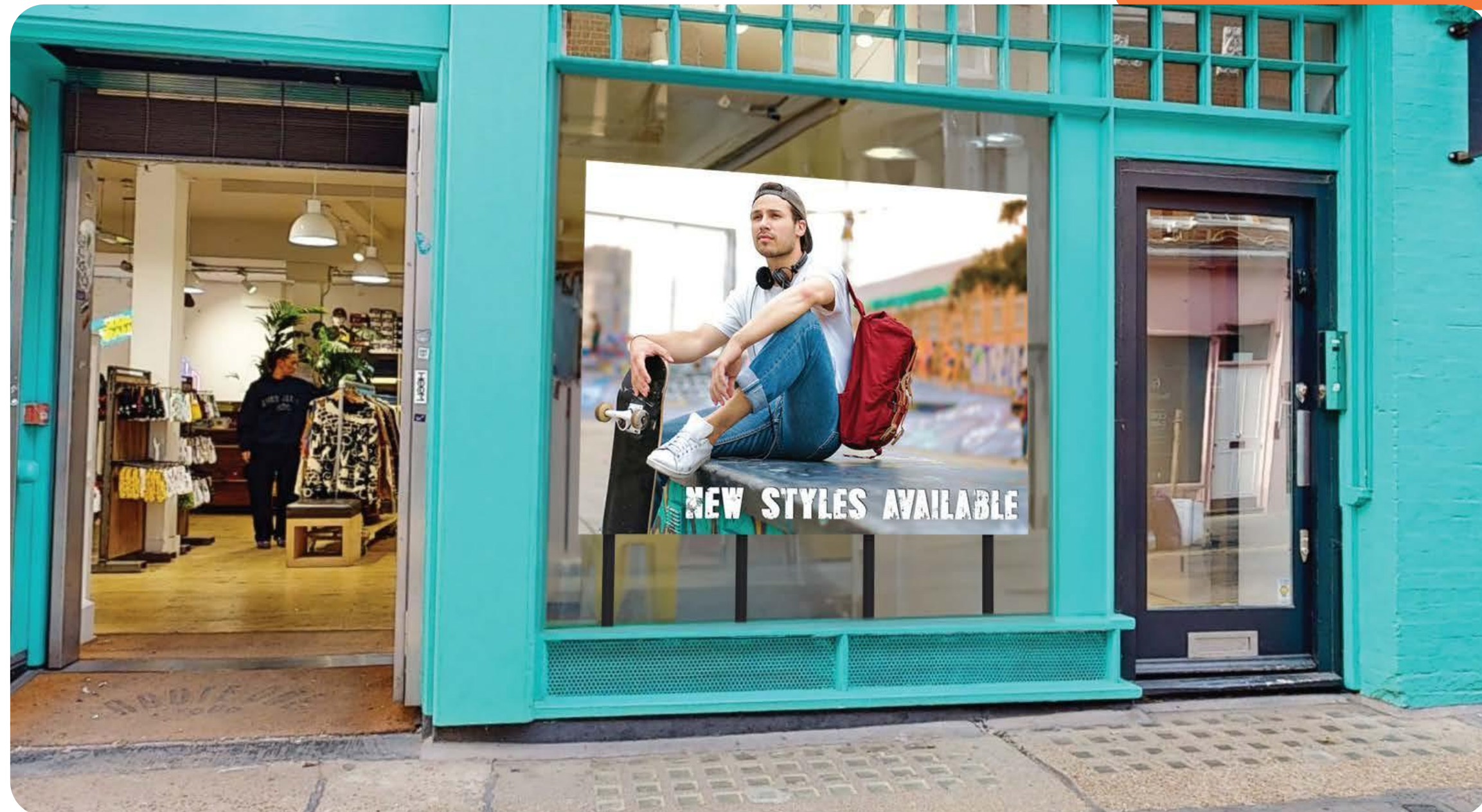
116" | 157" | 231"

Out-of-the-box solution for seamless large-scale advertising; ideal for storefront windows

With an incredible ultra-high brightness of 2,200cd/m², these DV-LED displays are three times as bright as our standard LCD displays.

From the direct view LED panels to the height-adjustable floor stand, this solution includes everything needed to get your display up and running in no time at all.

Flexible Mounting Solutions



Indoor DV-LED Freestanding Totems P2.5



Maximise visibility, flexibility and engagement with this all-in-one DV-LED totem solution.

Benefit from the stunning visuals direct view LED provides with a versatile freestanding totem. You have the chance to go bold with an eye-catching large scale viewing experience.

This solution is available in two brightness options, 550cd/m² that is perfect for commercial indoor spaces and a 2,200cd/m² variation that is optimised for window displays

Our modular DV-LED is also available in P1.8 and offer custom solutions including design and installation

Outdoor Android Displays

43" | 49" | 55" | 65"

Fully integrated Ultra High Bright displays; perfect for any weather conditions

Designed to withstand the elements, these displays are protected against all wet weather conditions and airborne dust particles by their robust IP65 rated enclosure.

Available in both wall mounted* and freestanding options

*additional sizes in 22" & 32"



Outdoor DV-LED Displays


P4 | P6

A robust and modular solution for creating seamless displays with phenomenal brightness and contrast that can withstand harsh outdoor conditions


A robust and modular solution for creating seamless displays with phenomenal brightness and contrast that can withstand harsh outdoor conditions

We offer customer solutions including design and installation






**3 Year
Warranty**



**24/7
Usage**



**Long
Lifespan**

IP65

Dust Resistance

6

Protected against dust that may harm equipment.

Water Resistance

5

Protected against water spray from all directions.

9

Our Services

- Project Management
- Installation
- Digital Signage Software
- Training & Support
- Technical Support & Maintenance
- Finance Options
- Manufacturer's Warranty
- Remote Management



Outdoor Fascia LED

Your Windsor Displays Contact

Kate Macro
kate@windsor-displays.com
01252 560 911